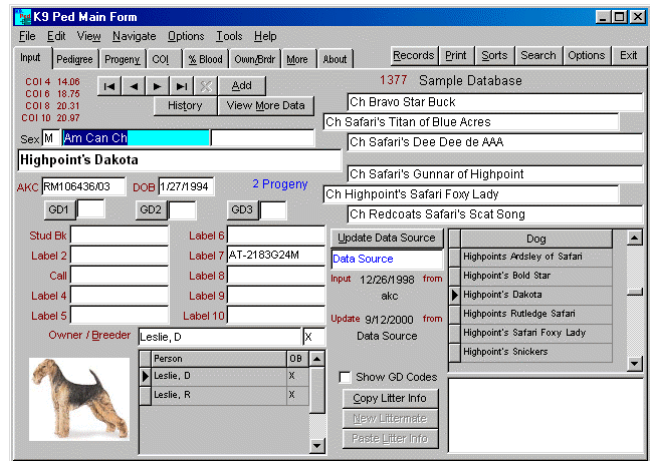
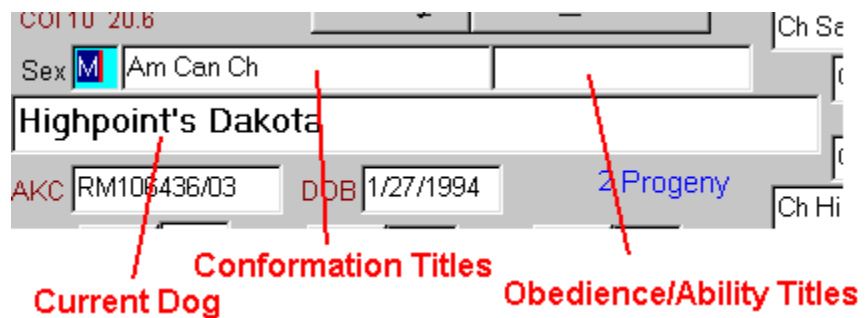


The Input Page



Basic Data Input



"Current Dog" is the name used to refer to the dog you are currently working with and to which all the data on all other forms are keyed. The initial page presented to you is the Entry/Search screen. To find or enter a name click on the Current Dog field or press F2 and start typing the dog's name. (In the future the alternate method will simply be noted in brackets after the primary method.) When you start typing the screen will change to the Entry page where a list of names matching the letters you have entered will be displayed. If the dog has previously been entered into the database that name will appear in the list and you can simply select the correct name by clicking on it. You will then be returned to the Entry page. If the name has not previously been entered, the program will prompt you for additional information and then add the dog to the database.

Hint: The F2 key or the ALT-Z key combination will move the cursor directly to the current dog field.

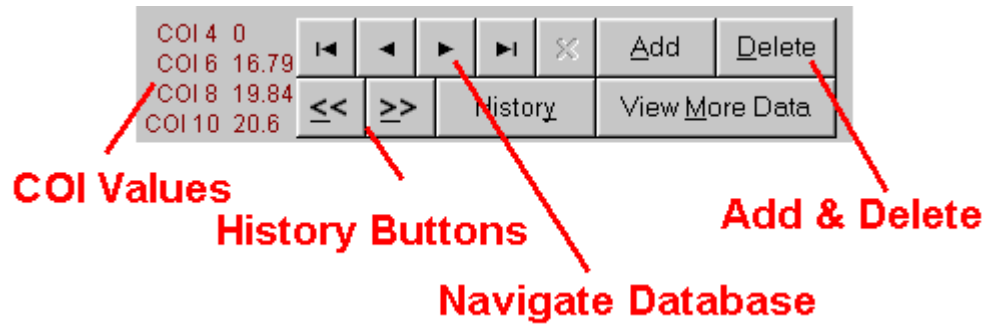
The dog's sex is entered as "M", "F", or "U". If you enter "D" for dog, or "B" for bitch, the program will automatically change them to "M" or "F". But if you do not know sex, it is important that you enter a "U" for unknown, or the program will not let you proceed leaving this empty field empty. The "U" can easily be changed when further data is available.

The next field to the right is the Conformation Title field, which should contain any Conformation Championship, or other title that precedes the Dog's registered name. The Obedience/Agility Title field is to the right of the Conformation Title field. In it should be entered any title that follows the Dog's registered name (Obedience Title, Agility Title, ROM, etc.). If there is an entry in either of these windows the dog's name will follow the general convention of printing Champions names in red in the pedigree. If there is some information that should always accompany the Dog's registered name, but which should not cause the name to be printed in red, this should be placed in another field formatted to accompany the name. Formatting such a field will be discussed later.

The AKC and DOB fields are used to enter the dog's AKC number and its date of birth. Please note they must be entered in the form noted in the above picture. The database can be sorted and then displayed using either of these field types.

Items in brackets [] indicate the hot key or keys that will perform the same action

History, Navigation, Add & Delete



The COI values (Coefficient Of Inbreeding) noted on the Entry page with a current dog are the four, six, eight, and ten generation COI values previously calculated for the current dog. These values are updated any time a ten or more generation COI is calculated for that dog. If you wish to calculate the COI for every dog in the database at the same time, click the Calculate All COI in the Tools menu. The COI values indicate the relative level of inbreeding and follow the Wright method for calculation.

The Navigation buttons are used to easily move to the first (<|), previous (<), next (>), or last (>|) dog in the database. The "X" button cancels the current changes.

The Add button [Alt A] moves your view to a blank Entry/Search screen. You can begin entering a dog this way or simply by typing into the Current Dog window on a used page. Any time you type in the current dog field the screen will change to the entry screen and a list of dogs in the data base with the letters you have typed will be presented. If the name you are typing is already in the database you can select it from the list by clicking on it at which time you will be returned to the Entry/Search screen. If the dog is not in the database, you will be prompted for additional information and then the dog will be added. The program is designed not to accept duplicate entries.

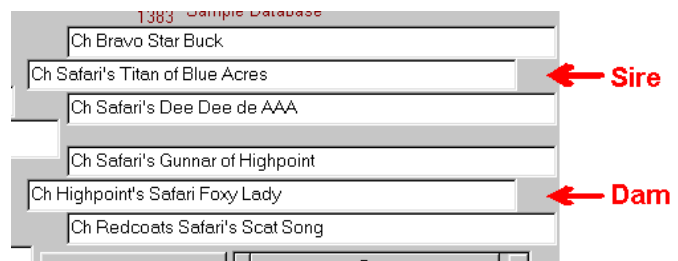
The Delete button deletes the presently highlighted item. If the Current Dog is highlighted, that dog's entire record will be deleted from the database. If a parent or grandparent is highlighted, only the ancestry link will be deleted leaving the record for each dog intact in the database. If an Owner/Breeder is highlighted the link between that person and dog will be deleted, but both records will remain in the database.

Hint: Right click on the name to pop up a menu with the delete option.

The History Forward and Back Buttons (<<) (>>) change the view either to the next, or last viewed screen. The << button only appears if you have moved back in the history file and it is used to return to the dog you were working on. The History Button will display all the dogs that have appeared in the current dog window during the current session.

The history buttons [<<] & [>>] change the current dog to previous current dogs. The [>>] button only appears if you move back in the history file and is used to return to the starting point. The "History" button will display all dogs used as the current dog during the current session.

Entering Parents and Grandparents



In order to highlight the current dog's sire [F3], dam [F4], or one of the grandparents click on that field. When you begin typing the name, you will be switched to the entry screen. If the dog has already been entered into the database it will appear in the list presented and you can select it by clicking on it. If it has not as yet been entered, the program will prompt you for additional information and then add the dog to the data base.

If you double click on the sire [F3], dam [F4], or one of the grandparents, that name will move to the current dog field and add the name to the history list.

Items in brackets [] indicate the hot key or keys that will perform the same action

Genetic Disease Values and Basic Data Fields

Data Field Names

These names are unique by breed. They are set using the "Change Breed Names, Hot names and GD percents" tab of the Options form.

Data Fields

Data fields are used to note primary information about the current dog. This can be set to display/not display on pedigrees and reports. The maximum length of each field is 20 characters. Special attributes can be assigned to different data fields, such as the dog's name being printed in red if there is any data in either the Confirmation or Obedience/Agility Title fields.

If you are using one of the data fields for a trait, right clicking on the field will move to "Data value distribution" page. Here you can look at the counts and percentages, both normal and "generation weighted", for any data field.

Hint: The key combinations Alt-1 > Alt-9 and Alt-0 can be used to move directly to a specified data field.

Genetic Disease Codes

The K9Ped program stores data for up to three genetic diseases per breed using a three letter abbreviation for each disease. The abbreviation and the average value for that disease are set using the Change Breed Names, Hot names and GD percents tab from the Options form.

The conditions of manifestation are designated with a one to three letter code, but only the first letter is used by the computer for calculations. The first letter codes are Affected, Carrier, Produced, Unaffected, clear (None) or left blank, to enable the user defined average for the disease and breed. The additional letters, if used, can indicate the source of the information. Thus, if the source of the information is from a request for an automatic propagation of information about an affected dog (all progeny and both parents of an affected dog are at least carriers), then the second letter would be a "P". To show a graphic representation of the risk factors, click on the button with the Genetic Disease abbreviation.

The screenshot shows a software interface with three columns labeled GD1, GD2, and GD3. Below each column are ten data fields labeled Data 1 through Data 10. Data 7 contains the text 'AT-2183G24M'. Red arrows point from labels below to the data fields and the GD3 column. The labels are: 'Data Fields' pointing to the data field boxes, 'Data Field Names (Labels)' pointing to the 'Data 1' through 'Data 10' labels, and 'G.D. Code' pointing to the GD3 column.

Input and Modify Owner/Breeder Data

The screenshot shows a software interface for entering owner/breeder data. On the left is a small image of a dog. To its right is a table with columns for 'Person', 'OB', and a code field. The table contains three entries: 'Leslie, D' with code 'X', 'Leslie, D' with code 'X', and 'Leslie, R' with code 'X'. Red arrows point from labels on the right to the code field, the table, and the list of entries. The labels are: 'Owner/Breeder Code (O,B or X)' pointing to the code field, 'Owner/Breeder Name' pointing to the table, and 'Owner/Breeder List' pointing to the list of entries.

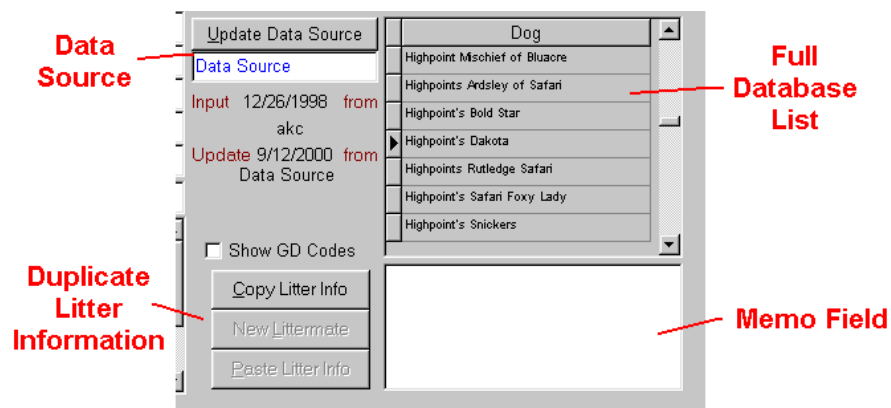
When you start to type an owners or breeder's name in the Owner/Breeder field the action will be similar to typing a dog's name into the Current Dog field except the display will contain previously used Owner/Breeder names. Because names are sorted by their first character, entering the last name followed by a comma and the first name is recommended. There is no limit to the number of owners or breeders for a dog. To preserve search, sort and display functions, it is recommended one use a single person per entry (i.e. Smith, John on one line and Smith, Mary on the next and not "Smith, John and Mary"). If you use a mixture of combined names and single names then displaying all dogs owned or bred by Smith, John will miss the ones listed as Smith, John and Mary.

The Owner/Breeder codes are O for Owner, B for Breeder and X for both.

Hints: Use Alt-B to move to the name field and Shift-Tab or Shift-Enter to move back to the name field from the code field.

Items in brackets [] indicate the hot key or keys that will perform the same action

Data Source, Duplicating Litter Information and Scrolling through the database



The text in the Data Source field is used when recording the date and source of entries. It is also used to record the date and source of the last update or edit of the information. This value should be set to indicate the source of the information being added or updated. If a new entry is not made into this field for each change, the value will be the same as it was in the last entry you made, no matter what dog it was.

Clicking on the **Copy Litter Info** button will save the litter information for the current dog. Litter information includes the Sire & dam, the date of birth and the AKC number up to the "/. **New Littermate** will initiate the "Add Dog" process but will include the litter information saved by the last Copy Litter action in the new dog's record. **Paste Litter Info** will replace blank fields for the current dog with the Sire, Dam, DOB and AKC number previously saved with the copy command.

Hint: Alt-C, Alt-L and Alt-P are the same as clicking the above buttons.

Use the up and down arrows to the right of the Full Database List to change the current dog to the one you click on. The Page-up and Page-down keys also can be used to move through this list. Note: Dogs selected this way are not added to the history listing.

The text in the "Data Source" is used to record the date of input and the source. It is also used to record the date and source of the last update or edit of this information. Set this value to indicate the source of the information being added or updated.

Items in brackets [] indicate the hot key or keys that will perform the same action